

**BEHLEN**  
STEEL BUILDINGS



# MINING BUILDINGS

CANADA'S LARGEST MANUFACTURER OF STEEL BUILDING SYSTEMS 

# OUR EXPERIENCE

Since 1969, **BEHLEN Industries LP** has grown to become Canada's largest manufacturer of steel building systems, with the capability to engineer and manufacture the most complex rigid frame steel building systems in the Canadian market.

The design and engineering requirements for steel building structures can be unique and complex, including:

- Supporting heavy cranes and other equipment
- Supporting mezzanines
- Achieving great heights
- Achieving ideal thermal values
- Withstanding exceptional environmental stresses

**BEHLEN Industries LP** has the solution to achieving the exceptional with our steel building systems.



## MARATHON GOLD

Achieving great heights in the gold mining industry.

*Featured on page 4.*



## NEWMONT CORPORATION

Supporting a network of mezzanines.

*Featured on page 7.*



## VICTORIA GOLD

Supporting heavy cranes and other equipment.

*Featured on page 5.*



## A LOOK INTO OUR MANUFACTURING PLANT

This Rigid Frame beam is 53 ft long by 8 ft tall, and weighs 14,000 lbs.

In this picture, our team is preparing the beam for painting in our manufacturing plant.

# PROUDLY CANADIAN

BEHLEN Industries LP is a company within WGI Westman Group Inc., a network of steel manufacturers operating throughout North America. While WGI is based in Winnipeg, MB, BEHLEN is located further west in Brandon, MB.



## MANUFACTURING FACILITY

**Location:** Brandon, MB

**Employees:** 250

**Land:** 20 Acres

**Size:** 224,000 ft<sup>2</sup>

**Capacity:** 27,000 US Tons of Structural Steel Annually

BEHLEN Industries LP was the first North American steel building manufacturer registered to ISO 9001.

**OUR CERTIFICATIONS:**

- CWB Management System Standard: ISO 9001:2015
- CWB Certification Standard CSA A660-10
- CWB Certified CSA Standard W47.1 Division 1
- CSSBI Certified Manufacturer of Steel Building Systems
- CISC Fabricator Member
- Canada's Best Managed Companies Platinum Member

**OUR PRODUCTS:**

- RIGID FRAME Steel Buildings
- ARTSPAN Insulated Metal Panels
- FRAMELESS Steel Buildings
- ARCHWALL Steel Buildings
- Custom Steel Fabrication Products

## WGI WESTMAN GROUP INC. COMPANIES:



# MARATHON GOLD

Marathon Gold Corporation's Grinding Building, located at their Valentine Gold project site in Buchans, NL, is a BEHLEN Rigid Frame building. There are approximately 10,100 unique weld points, 19,000 bolts, 2,000 light gauge members, and 1,200 structural members. The heaviest part weighs 19,000 lbs. This building supports a 25 tonne crane.

**Location:** Buchans, NL

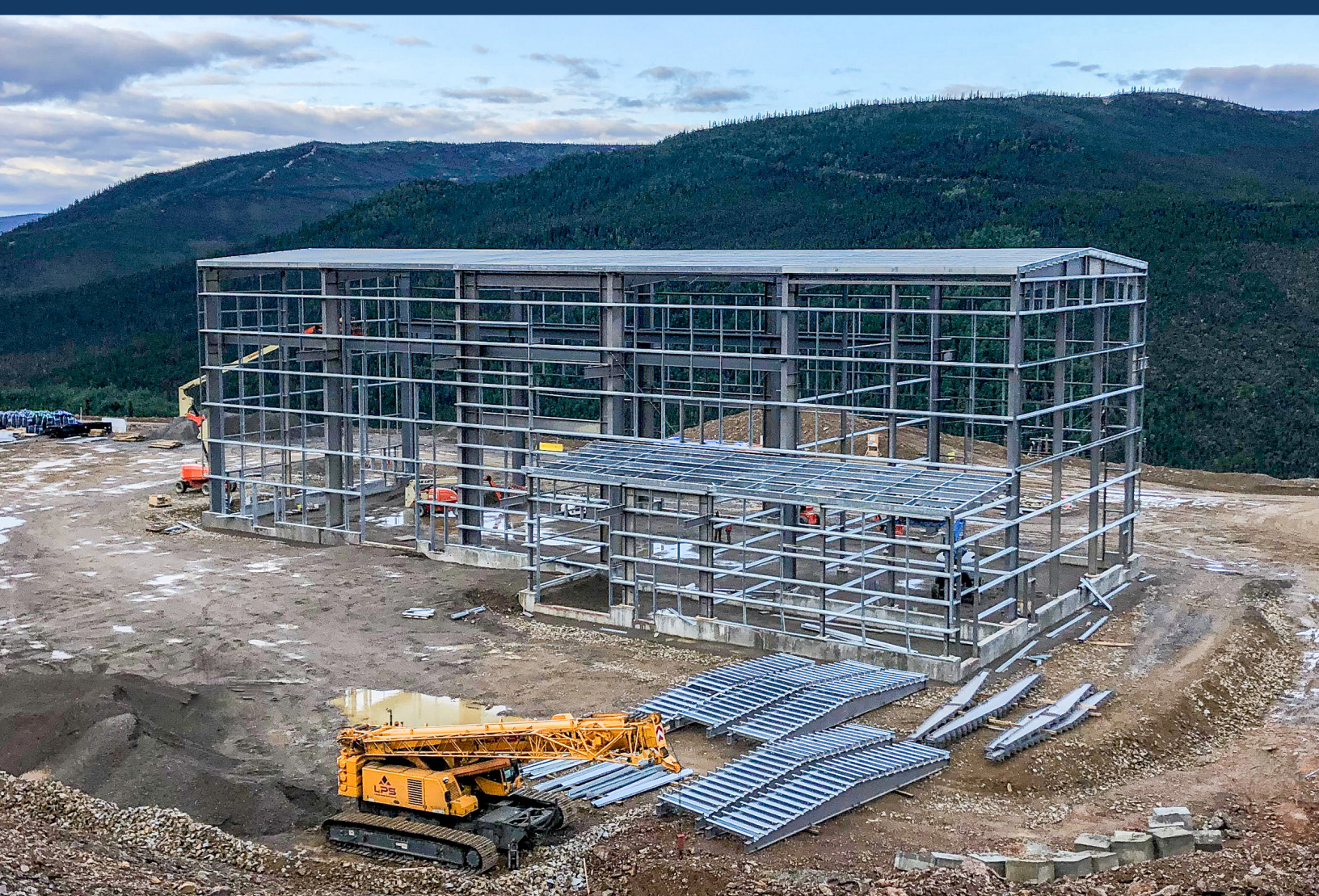
**Year:** 2024

**Steel Weight:** 2,800,000 lbs

**Footprint:** 55,000 ft<sup>2</sup>

**Highest Eave/Ridge Point:** 90'





# VICTORIA GOLD

Victoria Gold's Eagle Gold Mine, another BEHLEN Rigid Frame building, is located north of the town of Mayo in the Yukon. This truck shop, with a wash bay, has five 26 ft x 23 ft doors and a 20 tonne crane. It is finished with our ARTSPAN Insulated Metal Panels (IMPs).

**Location:** Mayo, YT  
**Year:** 2021

**Steel Weight:** 507,460 lbs  
**Footprint:** 12,300 ft<sup>2</sup>  
**Highest Eave/Ridge Point:** 56'

# LAKESHORE

In the year 2013, this mine produced over 747,500 metric tonnes of gold setting new industry standards.

**Location:** Timmins, ON

**Year:** 2008

## Hoist House

**Steel Weight:** 244,000 lbs

**Footprint:** 11,800 ft<sup>2</sup>

## Pump House

**Steel Weight:** 9,770 lbs

**Footprint:** 1,350 ft<sup>2</sup>





# NEWMONT CORPORATION

Red Chris Mine is located at the top of Todagin Mountain on the Stikine Range just south east of Iskut, BC, 1,700 km north of Vancouver. BEHLEN has supplied numerous buildings at this mine site with eave heights ranging up to 102' and crane capacities of 25 tonnes.

## Including:

- 6,000 ft<sup>2</sup> truck wash
- Core Palace for geological sample storage and investigation
- First Responders Services including ambulance and fire truck bays as well as personnel accommodations
- Explosives Storage Building
- Concentrate/Grinding Buildings

### Concentrate/Grinding Building

**Steel Weight:** 2,000,000 lbs

**Footprint:** 48,000 ft<sup>2</sup>

**Highest Eave/Ridge Point:** 102'

### Wash Building

**Steel Weight:** 34,700 lbs

**Footprint:** 6,000 ft<sup>2</sup>

**Highest Eave/Ridge Point:** 53'

# ANTAMINA ORE STORAGE

This Antamina Ore Storage Building is located in Puerto Huarmey, Peru. It features a 90 ft clear span by 200 ft long A-Frame, 101' clear height at peak, and 12 mil finish to the frames and structural bracing. This building is accompanied by an Ore Filter Building.

**Location:** Puerto Huarmey, Peru

**Year:** 2000

## Ore Storage Building

**Steel Weight:** 2,000,000 lbs

**Footprint:** 137,860 ft<sup>2</sup>

**Highest Eave/Ridge Point:** 101'

## Ore Filter Building

**Steel Weight:** 540,000 lbs

**Footprint:** 1,350 ft<sup>2</sup>





# LION'S HEAD STONE QUARRY

The Lion's Head Stone Quarry, located in Lions Head, Ontario, features our Rigid Frame steel structure, expertly designed to support both a quarry saw and a 10-tonne crane.

**Location:** Lion's Head, ON  
**Year:** 2007

**Steel Weight:** 135,886 lbs  
**Footprint:** 9,600 ft<sup>2</sup>  
**Highest Eave/Ridge Point:** 28'

# MORENCI COPPER MINE

The Morenci Copper Mine, located in Morenci, Arizona, features a BEHLEN Frameless Building constructed entirely with 316 stainless steel. The project incorporated steel in various gauges, including 12, 14, 16, 18, and 20. This steel structure is designed to support an industrial process known as "electrowinning," which uses acid to separate and form copper ingots - a process which creates a highly corrosive environment.

**Location:** Morenci, Arizona  
**Year:** 2001

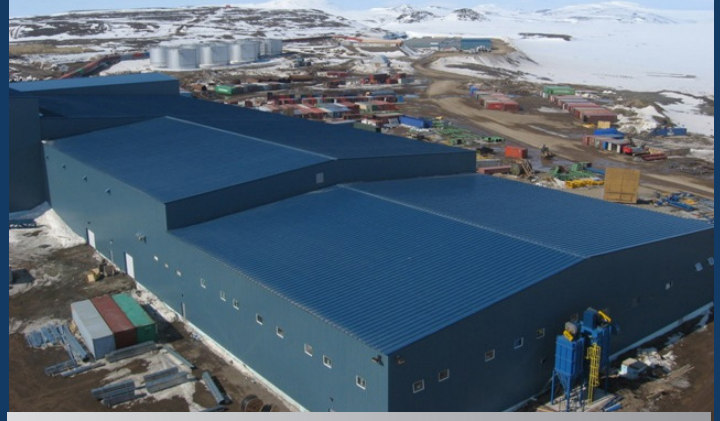
**Steel Weight:** 80,000 lbs  
**Highest Eave/Ridge Point:** 9'



# MORE BEHLEN BUILDINGS



GRANITE CANAL, HYDROELECTRIC DEVELOPMENT



BEMA GOLD, 4 BUILDINGS, TOTAL PROJECT 114,800 ft<sup>2</sup>



SYNCRUDE COMPOSITE TRAILINGS (CT) FACILITY



THOROLD COGENERATION STATION, NATURAL GAS-FIRED STATION



WESTERN COAL BRULE MINE



CONUMA COAL, WATER TREATMENT PLANT

# BEHLEN

STEEL BUILDINGS



[behlen.ca](http://behlen.ca) | [info@behlen.ca](mailto:info@behlen.ca) | 1 (888) 315-1035